



Infra material

Innovative ideas for a changing world.



Infra
according to Attema

Table of contents

FttX-distribution Closure

| | |
|------------------------------|---|
| Hybrid FiberManagement Plate | 5 |
| Midi Fiber Dome | 9 |

Fiber Management Box

| | |
|--|----|
| Hybrid FiberManagement Box | 13 |
| Street cabinet + hybrid Fiber Management Box | 15 |

Coupling-/repair closures

| | |
|---------------------------|----|
| Coupling-/repair closures | 21 |
|---------------------------|----|

Fiber Termination Unit

| | |
|------------------------|----|
| Fiber Termination Unit | 25 |
|------------------------|----|

Splice trays

| | |
|--------------|----|
| Splice trays | 29 |
|--------------|----|

Consolidationbox

| | |
|-------------------|----|
| Consolidation Box | 33 |
| Adapters | 35 |

Universal ICT-solutions

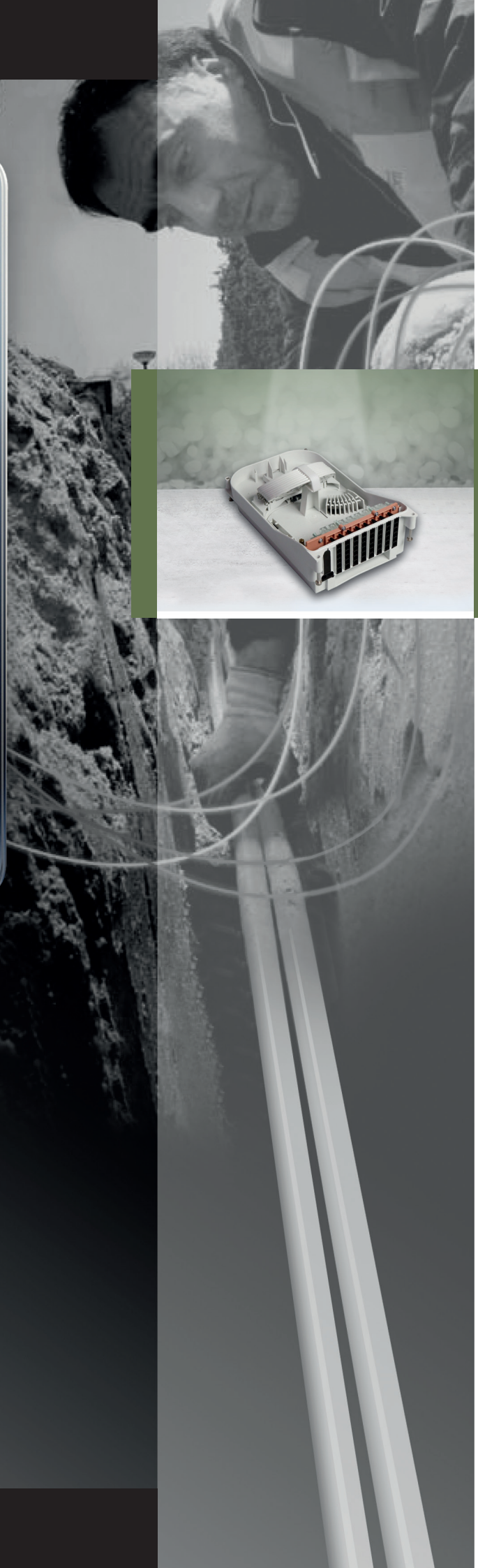
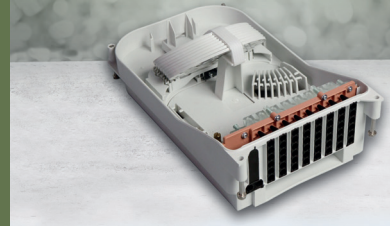
| | |
|---------------------|----|
| Patch cabinet, Data | 41 |
| Universal data box | 41 |
| Adapters | 42 |

Index

| | |
|----------------------|----|
| Article number index | 45 |
| Picture Index | 47 |

Table of contents

FttH Distribution Closure

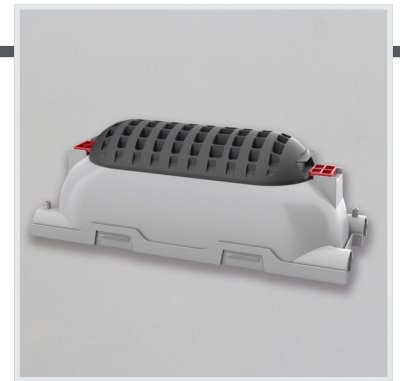


Hybrid FiberManagement Plate

Housing FttX-distribution sleeve

- One universal product for the civil engineering team, regardless of the chosen direct buried customer connection cable or duct.
- Standard detection coil in cover (telecommunication 101.4 kHz).
- Easy mounting.
- Sand-proof port seals.
- Parts packed in the correct sequence of use in a solid cardboard box.
- Instruction manual enclosed.
- Dimensions: 90x35x30cm (LxWxH), soil cover of 30 cm for wires at depth of 60 cm.

| Art. No. | Halogen free |  |
|----------|--------------|---|
| AT29030 | Yes | 1 pc. |



AT29030

Hybrid FiberManagement Plate (24v) 48HS / 8mm WC

- 24 hybrid entry ports Ø3,0 - 8,0 mm
- Flexibility in FttX concept
- Flexibility in managing the fiber optic network
- Integrated cable or duct retention
- Easy entry seal for each individual cable or duct
- Structured management of cables, ducts and fusion splices
- Suitable for direct buried cables or ducts
- Protection class IP 68
- Easy to install
- Window Cut

| Art. No. | Halogen free |  |
|----------|--------------|---|
| AT29331 | | 1 pc. |



AT29331

Hybrid FiberManagement Plate (24v) 96HS / 8mm WC

- 24 hybrid entry ports Ø3,0 - 8,0 mm
- Flexibility in FttX concept
- Flexibility in managing the fiber optic network
- Integrated cable or duct retention
- Easy entry seal for each individual cable or duct
- Structured management of cables, ducts and fusion splices
- Suitable for direct buried cables or ducts
- Protection class IP 68
- Easy to install
- Window Cut

| Art. No. | Halogen free |  |
|----------|--------------|---|
| AT29332 | | 1 pc. |



AT29332

FttX-distribution Closure

Hybrid FiberManagement Plate (24v) 192ANT / 4mm WC

- 24 hybrid entry ports Ø3,0 - 8,0 mm
- Flexibility in FttX concept
- Flexibility in managing the fiber optic network
- Integrated cable or duct retention
- Easy entry seal for each individual cable or duct
- Structured management of cables, ducts and fusion splices
- Suitable for direct buried cables or ducts
- Protection class IP 68
- Easy to install
- Window Cut

| | | |
|----------|--------------|---|
| Art. No. | Halogen free |  |
| AT29333 | | 1 pc. |



AT29333

Hybrid FiberManagement Plate (48v) 96HS / 8mm

- 48 hybrid entry ports Ø3,0 - 8,0 mm
- Flexibility in FttX concept
- Flexibility in managing the fiber optic network
- Integrated cable or duct retention
- Easy entry seal for each individual cable or duct
- Structured management of cables, ducts and fusion splices
- Suitable for direct buried cables or ducts
- Protection class IP 68
- Easy to install

| | | |
|----------|--------------|---|
| Art. No. | Halogen free |  |
| AT29341 | | 1 pc. |



AT29341

Hybrid FiberManagement Plate (48v) 48HS / 8mm

- 48 hybrid entry ports Ø3,0 - 8,0 mm
- Flexibility in FttX concept
- Flexibility in managing the fiber optic network
- Integrated cable or duct retention
- Easy entry seal for each individual cable or duct
- Structured management of cables, ducts and fusion splices
- Suitable for direct buried cables or ducts
- Protection class IP 68
- Easy to install

| | | |
|----------|--------------|---|
| Art. No. | Halogen free |  |
| AT29342 | | 1 pc. |



AT29342

Hybrid FiberManagement Plate (48v) 48HS / 4mm

- 48 hybrid entry ports Ø3,0 - 8,0 mm
- Flexibility in FttX concept
- Flexibility in managing the fiber optic network
- Integrated cable or duct retention
- Easy entry seal for each individual cable or duct
- Structured management of cables, ducts and fusion splices
- Suitable for direct buried cables or ducts
- Protection class IP 68
- Easy to install

| Art. No. | Halogen free |  |
|----------|--------------|---|
| AT29343 | | 1 pc. |



AT29343

Hybrid FiberManagement Plate (48v) 192ANT / 4mm

- 48 hybrid entry ports Ø3,0 - 8,0 mm
- Flexibility in FttX concept
- Flexibility in managing the fiber optic network
- Integrated cable or duct retention
- Easy entry seal for each individual cable or duct
- Structured management of cables, ducts and fusion splices
- Suitable for direct buried cables or ducts
- Protection class IP 68
- Easy to install

| Art. No. | Halogen free |  |
|----------|--------------|---|
| AT29344 | | 1 pc. |



AT29344

Hybrid FiberManagement Plate (48v) 192ANT / 4mm WC

- 48 hybrid entry ports Ø3,0 - 8,0 mm
- Flexibility in FttX concept
- Flexibility in managing the fiber optic network
- Integrated cable or duct retention
- Easy entry seal for each individual cable or duct
- Structured management of cables, ducts and fusion splices
- Suitable for direct buried cables or ducts
- Protection class IP 68
- Easy to install
- Window Cut

| Art. No. | Halogen free |  |
|----------|--------------|---|
| AT29351 | | 1 pc. |



AT29351

FttX-distribution Closure

Hybrid FiberManagement Plate (48v) 96HS / 8mm WC

- 48 hybrid entry ports Ø3,0 - 8,0 mm
- Flexibility in FttX concept
- Flexibility in managing the fiber optic network
- Integrated cable or duct retention
- Easy entry seal for each individual cable or duct
- Structured management of cables, ducts and fusion splices
- Suitable for direct buried cables or ducts
- Protection class IP 68
- Easy to install
- Window Cut



AT29352

| | | |
|----------|--------------|---|
| Art. No. | Halogen free |  |
|----------|--------------|---|

AT29352 1 pc.

Hybrid FiberManagement Plate (48v) 96ANT / 4mm WC

- 48 hybrid entry ports Ø3,0 - 8,0 mm
- Flexibility in FttX concept
- Flexibility in managing the fiber optic network
- Integrated cable or duct retention
- Easy entry seal for each individual cable or duct
- Structured management of cables, ducts and fusion splices
- Suitable for direct buried cables or ducts
- Protection class IP 68
- Easy to install
- Window Cut



AT29353

| | | |
|----------|--------------|---|
| Art. No. | Halogen free |  |
|----------|--------------|---|

AT29353 1 pc.

Hybrid FiberManagement Plate (48v) 96ANT / 8mm WC

- 48 hybrid entry ports Ø3,0 - 8,0 mm
- Flexibility in FttX concept
- Flexibility in managing the fiber optic network
- Integrated cable or duct retention
- Easy entry seal for each individual cable or duct
- Structured management of cables, ducts and fusion splices
- Suitable for direct buried cables or ducts
- Protection class IP 68
- Easy to install
- Window Cut



AT29354

| | | |
|----------|--------------|---|
| Art. No. | Halogen free |  |
|----------|--------------|---|

AT29354 1 pc.

Hybrid cover plug

- Suitable for sealing the unused entry ports of all hybrid Fiber Management Plates & Boxes
- Easy to remove with (point) plier

Art. No.

Halogen free



AT29397

5 x 100 pcs



AT29397

Midi Fiber Dome

Midi Fiber Dome (HS)

- Multi-functional product
- Universal solution for cable / duct diameters Ø 2,5 - 8,0mm
- Integrated strain relief per cable / duct
- Window Cut possibility
- Plug & Play installation
- 2x 12 splice protectors heatshrink Ø 2,4 mm x 45 mm

Art. No.



AT29292
IP68

1 pc.



AT29292

Midi Fiber Dome (ANT)

- Multi-functional product
- Universal solution for cable / duct diameters Ø 2,5 - 8,0mm
- Integrated strain relief per cable / duct
- Window Cut possibility
- Plug & Play installation
- 2x 12 splice protectors ANT or mini heatshrink

Art. No.



AT29293
IP68

1 pc.



AT29293

FttX-distribution Closure

Fiber Management Box



Hybrid FiberManagement Box

Hybrid FiberManagement Box (24v) 48HS / 8mm WC

- 24 hybrid entry ports Ø3,0 - 8,0 mm
- Flexibility in FttX concept
- Flexibility in managing the fiber optic network
- Easy entry seal for each individual cable or duct
- Structured management of cables, ducts and fusion splices
- Suitable for direct buried cables or ducts
- Easy to install
- Saving labour costs
- Protection class IP65
- Impact resistant
- Window Cut

| Art. No. | Halogen free |  |
|----------|--------------|---|
| AT29391 | | 1 pc. |

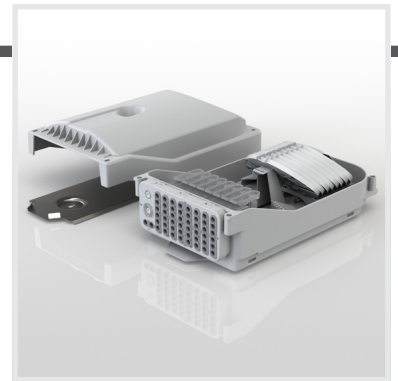


AT29391

Hybrid FiberManagement Box (48v) 96HS / 8mm

- 48 hybrid entry ports Ø3,0 - 8,0 mm
- Flexibility in FttX concept
- Flexibility in managing the fiber optic network
- Easy entry seal for each individual cable or duct
- Structured management of cables, ducts and fusion splices
- Suitable for direct buried cables or ducts
- Easy to install
- Saving labour costs
- Protection class IP65
- Impact resistant

| Art. No. | Halogen free |  |
|----------|--------------|---|
| AT29361 | | 1 pc. |



AT29361

Hybrid FiberManagement Box (48v) 96ANT / 8mm

- 48 hybrid entry ports Ø3,0 - 8,0 mm
- Flexibility in FttX concept
- Flexibility in managing the fiber optic network
- Easy entry seal for each individual cable or duct
- Structured management of cables, ducts and fusion splices
- Suitable for direct buried cables or ducts
- Easy to install
- Saving labour costs
- Protection class IP65
- Impact resistant

| Art. No. | Halogen free |  |
|----------|--------------|---|
| AT29362 | | 1 pc. |



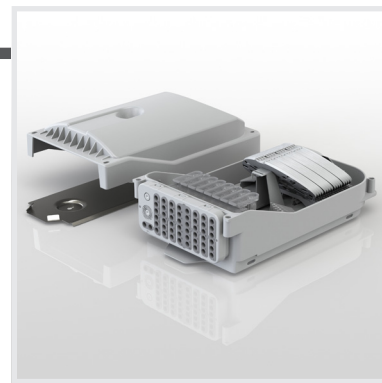
AT29362

Fiber Management Box

Hybrid FiberManagement Box (48v) 192ANT / 4mm

- 48 hybrid entry ports Ø3,0 - 8,0 mm
- Flexibility in FttX concept
- Flexibility in managing the fiber optic network
- Easy entry seal for each individual cable or duct
- Structured management of cables, ducts and fusion splices
- Suitable for direct buried cables or ducts
- Easy to install
- Saving labour costs
- Protection class IP65
- Impact resistant

| | | |
|----------|--------------|---|
| Art. No. | Halogen free |  |
| AT29363 | | 1 pc. |

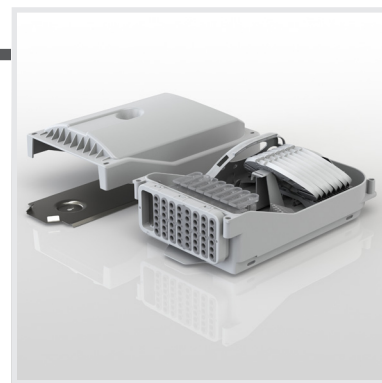


AT29363

Hybrid FiberManagement Box (48v) 96ANT / 8mm WC

- 48 hybrid entry ports Ø3,0 - 8,0 mm
- Flexibility in FttX concept
- Flexibility in managing the fiber optic network
- Easy entry seal for each individual cable or duct
- Structured management of cables, ducts and fusion splices
- Suitable for direct buried cables or ducts
- Easy to install
- Saving labour costs
- Protection class IP65
- Impact resistant
- Window Cut

| | | |
|----------|--------------|---|
| Art. No. | Halogen free |  |
| AT29371 | | 1 pc. |

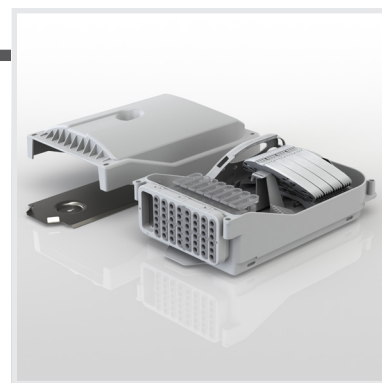


AT29371

Hybrid FiberManagement Box (48v) 192ANT / 4mm WC

- 48 hybrid entry ports Ø3,0 - 8,0 mm
- Flexibility in FttX concept
- Flexibility in managing the fiber optic network
- Easy entry seal for each individual cable or duct
- Structured management of cables, ducts and fusion splices
- Suitable for direct buried cables or ducts
- Easy to install
- Saving labour costs
- Protection class IP65
- Impact resistant
- Window Cut

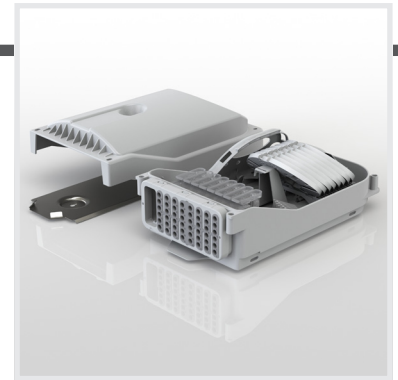
| | | |
|----------|--------------|---|
| Art. No. | Halogen free |  |
| AT29372 | | 1 pc. |



AT29372

Hybrid FiberManagement Box (48v) 96HS / 8mm WC

- 48 hybrid entry ports Ø3,0 - 8,0 mm
- Flexibility in FttX concept
- Flexibility in managing the fiber optic network
- Easy entry seal for each individual cable or duct
- Structured management of cables, ducts and fusion splices
- Suitable for direct buried cables or ducts
- Easy to install
- Saving labour costs
- Protection class IP65
- Impact resistant
- Window Cut



AT29373

| Art. No. | Halogen free |  |
|----------|--------------|---|
| AT29373 | | 1 pc. |

Hybrid cover plug

- Suitable for sealing the unused entry ports of all hybrid Fiber Management Plates & Boxes
- Easy to remove with (point) plier



AT29397

| Art. No. | Halogen free |  |
|----------|--------------|---|
| AT29397 | | 5 x 100 pcs |

Street cabinet + hybrid Fiber Management Box

Street Cabinet + hybrid FiberManagement Box (24v) + Window Cut

- Street cabinet:
 - 60-80µm Polyester Powder coating
 - Integrated Foundation
 - Stainless Steel
 - Universal ½ Euro cylinder
 - Weather resistant mounting panel
 - Detachable front panel
 - Premounted fixation points for ducts and cables
- Hybrid FM Box:
 - Hybrid entry ports Ø3,0 - 8,0 mm
 - Flexibility in FttX concept
 - Flexibility in managing the fiber optic network
 - Easy entry seal for each individual cable or duct
 - Structured management of cables, ducts and fusion splices
 - Suitable for direct buried cables or ducts
 - Easy to install
 - Saving labour costs
 - Protection class IP65
 - Impact resistant



AT29316

| Art. No. | Halogen free |  |
|----------|--------------|---|
| AT29316 | | |

Fiber Management Box

Street Cabinet + hybrid FiberManagement Box (48v)

- Street cabinet:
- 60-80µm Polyester Powder coating
- Integrated Foundation
- Stainless Steel
- Universal ½ Euro cylinder
- Weather resistant mounting panel
- Detachable front panel
- Premounted fixation points for ducts and cables
-
- Hybrid FM Box:
- Hybrid entry ports Ø3,0 - 8,0 mm
- Flexibility in FttX concept
- Flexibility in managing the fiber optic network
- Easy entry seal for each individual cable or duct
- Structured management of cables, ducts and fusion splices
- Suitable for direct buried cables or ducts
- Easy to install
- Saving labour costs
- Protection class IP65
- Impact resistant



AT29311

Art. No.

Halogen free



AT29311

Street cabinet + hybrid FiberManagement Box (48v)

- Street cabinet:
- 60-80µm Polyester Powder coating
- Integrated Foundation
- Stainless Steel
- Universal ½ Euro cylinder
- Weather resistant mounting panel
- Detachable front panel
- Premounted fixation points for ducts and cables
-
- Hybrid FM Box:
- Hybrid entry ports Ø3,0 - 8,0 mm
- Flexibility in FttX concept
- Flexibility in managing the fiber optic network
- Easy entry seal for each individual cable or duct
- Structured management of cables, ducts and fusion splices
- Suitable for direct buried cables or ducts
- Easy to install
- Saving labour costs
- Protection class IP65
- Impact resistant



AT29312

Art. No.

Halogen free



AT29312

Street cabinet + hybrid FiberManagement Box (48v)

- Street cabinet:
- 60-80µm Polyester Powder coating
- Integrated Foundation
- Stainless Steel
- Universal ½ Euro cylinder
- Weather resistant mounting panel
- Detachable front panel
- Premounted fixation points for ducts and cables
-
- Hybrid FM Box:
- Hybrid entry ports Ø3,0 - 8,0 mm
- Flexibility in FttX concept
- Flexibility in managing the fiber optic network
- Easy entry seal for each individual cable or duct
- Structured management of cables, ducts and fusion splices
- Suitable for direct buried cables or ducts
- Easy to install
- Saving labour costs
- Protection class IP65
- Impact resistant



AT29313

Art. No.

Halogen free



AT29313

Street cabinet + hybrid FiberManagement Box (48v) + Window Cut

- Street cabinet:
- 60-80µm Polyester Powder coating
- Integrated Foundation
- Stainless Steel
- Universal ½ Euro cylinder
- Weather resistant mounting panel
- Detachable front panel
- Premounted fixation points for ducts and cables
-
- Hybrid FM Box:
- Hybrid entry ports Ø3,0 - 8,0 mm
- Flexibility in FttX concept
- Flexibility in managing the fiber optic network
- Easy entry seal for each individual cable or duct
- Structured management of cables, ducts and fusion splices
- Suitable for direct buried cables or ducts
- Easy to install
- Saving labour costs
- Protection class IP65
- Impact resistant



AT29321

Art. No.

Halogen free



AT29321

Fiber Management Box



Coupling- / repair closures



Coupling-/repair closures

Compact Fiber Dome Cable 5 - 6,5 mm.

- Compact dimensions: Ø85 mm x 155 mm
- Watertight IP68 according to 60529
- Suitable for cable diameters: Ø 5 mm - Ø 6,5 mm
- Integrated cable retention per cable
- Cassette suitable for optical fiber with R = 22,5 mm
- Splice tray capacity: 2 splice protectors ANT/mini heatshrink or 2 splice protectors heatshrink Ø 2,4 mm x 45 mm.
- Per piece packed in a transparent sealed bag



| Art. No. |  | Halogen free |  |
|----------|---|--------------|---|
| AT29017 | IP68 | Yes | 25 pcs |



AT29017

Compact Fiber Dome Duct 7 - 8 mm.

- Compact dimensions: Ø85 mm x 155 mm.
- Watertight IP68 according to EN 60529.
- Suitable for duct diameters: Ø 7 mm - Ø 8 mm.
- Integrated duct retention.
- Cassette suitable for optical fiber with R = 22,5 mm.
- Splice tray capacity: 6 splice protectors heatshrink Ø 2,4 mm x 45 mm.
- Easy to install.
- Universal applicable.
- Impact resistant.



| Art. No. |  | Halogen free |  |
|----------|---|--------------|---|
| AT29018 | IP68 | Yes | 25 pcs |



AT29018

Compact Fiber Dome Aerial 3 - 6,5 mm.

- Compact dimensions: Ø85 mm x 155 mm.
- Watertight IP68 according to 60529.
- Suitable for cable diameters: Ø 3 mm - Ø 6,5 mm.
- Integrated cable retention.
- Cassette suitable for optical fiber with R = 22,5 mm.
- Splice tray capacity: 2 splice protectors ANT/mini heatshrink or 2 splice protectors heatshrink Ø 2,4 mm x 45 mm.
- Easy to install.
- Universal applicable.
- Impact resistant.
- Increased UV-resistant.

| Art. No. |  | Halogen free |  |
|----------|---|--------------|---|
| AT29020 | IP68 | Yes | 25 pcs |



AT29020

Coupling-/repair closures

Mounting bracket CFD

- Easy to install.
- Universally applicable.
- Impact resistant.
- Extra protection CFD.
- Fixed and temporary connections.

Art. No.



AT29027

5 pcs



AT29027

Repair Closure AK2-Fiber

- Compact dimensions 120x95x55mm (LxWxH)
- Watertight IP68 according to EN 60529
- Clamp range cable gland: Ø 5mm - Ø 10mm
- Locking by means of incorporated cable retention in the box
- Cassette suitable for SM fiber glass G65A, R = 23 mm
- Suitable for 6x Heatshrink Ø 2.4 x 45mm welding protectors
- Packed per piece in transparent film, 5 pieces per carton
- Mounting instructions included
- Halogen-free

Art. No.



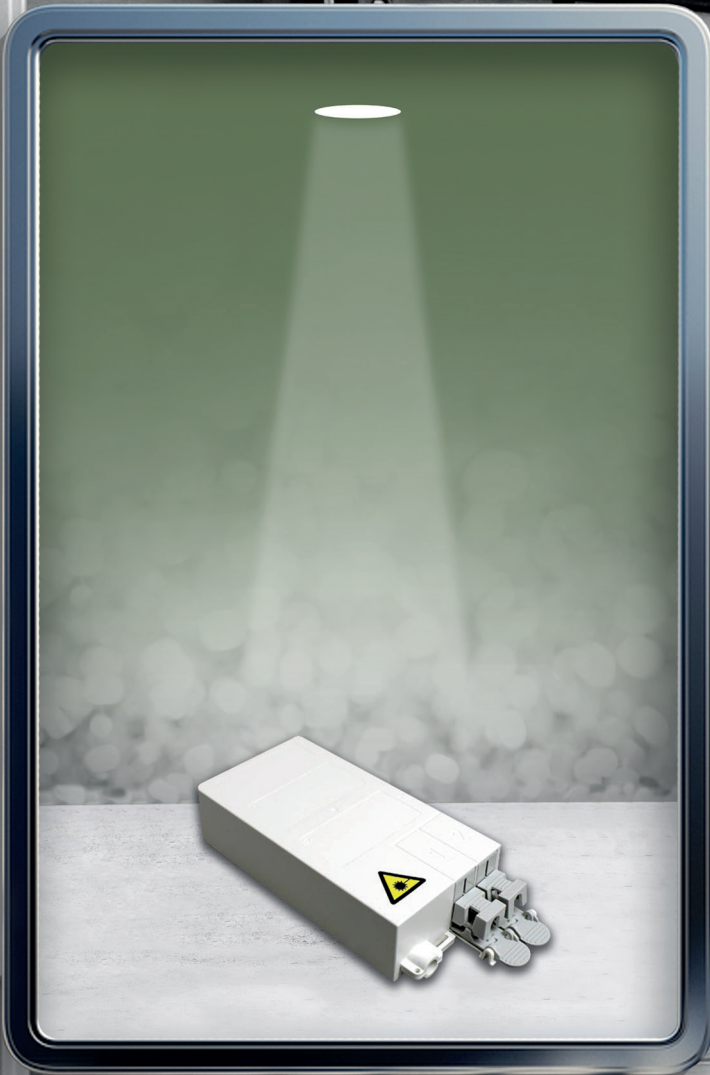
AT29016

5 pcs



AT29016

Fiber Termination Unit



Fiber Termination Unit

Attema Universal FTU

- Extremely compact and streamlined shape.
- Standard with connection buses SC/APC, provided with integrated dust seal.
- Simple, clean and safe patch connection made with insertable module.
- Can be sealed on both the passive and the active sides.
- Time-saving through the systematic assembly sequence.
- Can be used pre-installed as well.

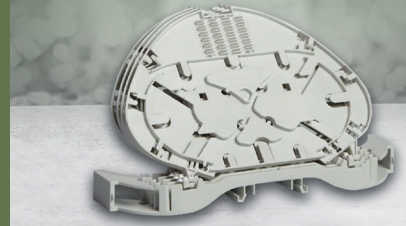
| Art. No. | Halogen free |  |
|----------|--------------|---|
| AT29100 | Yes | 8 pcs. |



AT29100

Fiber Termination Unit

Universal splice trays



Splice trays

Universal splice trays 24HS / 8mm

- Set of patent splice trays for heat-shrink splice protector Ø2.4mm x length 45mm.
-
- Contains:
- 2 cassettes HS12 / 8mm, each containing 12 heat-shrink splice protectors + 1 grooved cassette case, overall capacity 24 splices.

| Art. No. | Halogen free |  |
|----------|--------------|---|
| AT29012 | Yes | 25 pcs |



AT29012

Universal splice trays 24ANT / 8mm

- Set of patent splice trays for ANT-Sandwich splice protector (Telent) or mini heat-shrink splice protector SMK length 30 mm.
-
- Contains:
- 2 trays SW12 / 8mm, each containing 12 ANT-Sandwich splice protectors + 1 grooved tray case, overall capacity 24 splices.

| Art. No. | Halogen free |  |
|----------|--------------|---|
| AT29008 | Yes | 25 pcs |



AT29008

Universal splice trays 48ANT / 4mm

- For ANT-Sandwich splice protector (Telent) or mini heat-shrink splice protector SMK length 30 mm.
-
- Contains:
- 4 trays SW12 / 4mm, each containing 12 ANT-Sandwich splice protectors + 1 grooved tray case, overall capacity 48 welds.
-
- Per tray a tube with 12 fibres can be welded.

| Art. No. | Halogen free |  |
|----------|--------------|---|
| AT29004 | Yes | 25 pcs |



AT29004

Splice trays

Universal splice trays 24HS / 4mm

- For heat-shrink splice protector Ø2.4mm x length 45mm.
-
- Contains:
- 4 trays HS06 / 4mm, each containing 6 heat-shrink splice protectors + 1 grooved tray case, overall capacity 24 splices.

| Art. No. | Halogen free |  |
|----------|--------------|---|
| AT29002 | Yes | 25 pcs |

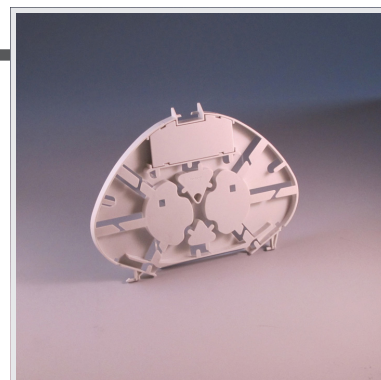


AT29002

Universal Splitter Tray 8mm

- Special, loose, patented splitter tray including soft foam layer and cover for splitter area. Suited for storing different types and sizes of glass fibre splitters.
- The storage tray is fitted on both sides with a soft foam insert, keeping the sensitive splitters in their position under all circumstances.
- The cover for the splitter storage box simply clicks into the tray and can be easily dismounted using a small screwdriver.
- Dimensions of storage box for splitters: 60 x 18 x 4mm.
-
- To be applied in combination with universal splice trays. The splitter tray fits on the existing tray case. This enables to exchange or add parts in a given situation.

| Art. No. | Halogen free |  |
|----------|--------------|---|
| AT29009 | Yes | 30 pcs |



AT29009

Cover for universal splice tray, including laser light warning

- Snap-in attachment on tray.
- No tools required.

| Art. No. | Halogen free |  |
|----------|--------------|---|
| AT29003 | Yes | 25 pcs |

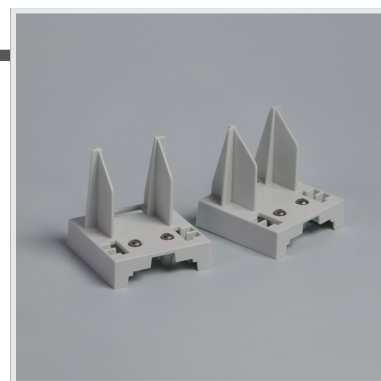


AT29003

Final plugs (set of 2 pieces)

- Snaps in on standard mounting rails TH 35-7.5mm
- Fixed on rails by way of screws.
- Including recess for Velcro fastening.
- For Velcro fastening of max. 16mm wide.

| Art. No. | Halogen free |  |
|----------|--------------|---|
| AT29005 | Yes | 25 pcs |



AT29005


Consolidation Box



Consolidation Box

AK2-S Data/VK

- Each cable box includes 2 soft slide-in data lead-ins and 1 slide-in blind cover.
- Version with flat plastic mounting plate for rapid 'click'-mounting to cable trays.
- Matching AK2-D cover and RJ45 adapters can be ordered separately.


| Art. No. | Halogen free |  |
|----------|--------------|---|
| AT1960 | Yes | 10 pcs |



AT1960

AK2-S Data/GZ

- Each cable box includes 2 soft slide-in data lead-ins and 1 slide-in blind cover.
- Version with angled mounting plate for rapid 'click'-mounting to cable trays.
- Matching AK2-D cover and RJ45 adapters can be ordered separately.


| Art. No. | Halogen free |  |
|----------|--------------|---|
| AT1961 | Yes | 10 pcs |



AT1961

AK2-S Data/MK

- Each junction box includes two soft slide-in data lead-ins and one slide-in blind cover.
- Design with a compact assembly plate for quick "click" assembly on the side of the cable duct.
- Suitable for all common cable duct brands.
- Can also be fitted underneath some cable ducts.
- Matching AK2-D cover and RJ45 adapters can be ordered separately.
-


| Art. No. | Halogen free |  |
|----------|--------------|---|
| AT1958 | Yes | 15 pcs |



AT1958

AK2-S Data enclosure base

- Each cable box includes 2 soft slide-in data lead-ins and 1 slide-in blind cover.
- Specially designed for applications without mounting plate.
- Matching AK2-D cover and RJ45 adapters available separately.

| Art. No. | Halogen free |  |
|----------|--------------|---|
| AT1962 | Yes | 5 x 10 pcs |





AT1962

Consolidationbox

AK2-S L/D data enclosure base

- Suitable for attachment to wiring-duct mounting plate (art.no. 2228).
- Each cable box includes 2 soft slide-in data lead-ins and 1 slide-in blind cover.
- Matching AK2 cover of choice can be ordered separately.


| Art. No. |  | Halogen free |  |
|----------|---|--------------|---|
| AT1963 | IP40 | Yes | 15 pcs |



AT1963

Slide-in data lead-in

- The slide-in data lead-in, made of soft rubber, is suitable for the lead-in of a maximum of 3 data cables (UTP, FTP, STP etc.).
- Provides grip on the cable sheath without untwisting the conductor pairs or in any other way influencing the data transmission.

| Art. No. | Halogen free |  |
|----------|--------------|---|
| AT1966 | Yes | 5 x 10 pcs |



AT1966

AK2-D Data cover

- Raised AK2 cover equipped with 6 knock-out ports for the placement of adapters.
- The adapter allows attachment of any brand or type of RJ45 connector and can be ordered separately.
- The cover has provisions along the edge to allow easy labelling.


| Art. No. | Halogen free |  |
|----------|--------------|---|
| AT1964 | Yes | 5 x 10 pcs |



AT1964

AK2-D4 cat 6/7 Data cover

- Raised AK2 cover equipped with 4 knock-out ports for the placement of adapters.
- The adapter allows attachment of almost any brand or type of RJ45 connector and can be ordered separately.
- The cover has provisions along the edge to allow easy labelling.

| Art. No. | Halogen free |  |
|----------|--------------|---|
| AT1965 | Yes | 5 x 5 pcs |




AT1965

Adapters

Adapter Blind, type X

- Blind cover for sealing an open break-out port in the AK2-D cover after a change or a mistake.
- Blind cover for sealing an open break-out port in the Patch Cabinet after a change or a mistake.
- The blind cover is used to seal any opening behind the dust cap in the Universal Data Box.


| Art. No. | Halogen free |  |
|----------|--------------|---|
| AT1970 | Yes | 5 x 10 pcs |



AT1970

Adapter A, type Avaya Systemax

- Adapter for attachment of an Avaya RJ45 connector in the AK2-D cover.
- Version 'L' has a label window for placement of a labelling strip


| Art. No. | Halogen free | With label window |  |
|----------|--------------|-------------------|---|
| AT1972 | Yes | No | 4 x 25 pcs |
| AT1973 | Yes | Yes | 4 x 25 pcs |



AT1972

Adapter B, type 20,4mm

- Adapter for attachment of various types of RJ45 connector in the AK2-D cover, such as those made by Brand-rex, AMP-Tyco and Nexans.
- Version 'L' has a label window for placement of a coding strip


| Art. No. | Halogen free | With label window |  |
|----------|--------------|-------------------|---|
| AT1974 | Yes | No | 4 x 25 pcs |
| AT1975 | Yes | Yes | 4 x 25 pcs |



AT1974

Adapter C, type 19.4 mm

- Adapter for attachment of various types of RJ45 connector in the AK2-D cover, such as those made by 3M, Krone, Siemon and Radial.
- Version 'L' has a label window for placement of a coding strip.

| Art. No. | Halogen free | With label window |  |
|----------|--------------|-------------------|---|
| AT1976 | Yes | No | 4 x 25 pcs |
| AT1977 | Yes | Yes | 4 x 25 pcs |




AT1976

Consolidationbox

Adapter I+, type Infra Plus

- Adapter for attachment of an InfraPlus RJ45 connector in the Universal Data Box, Patch Cabinet or the AK2-D cover.


| Art. No. | Halogen free | With label window |  |
|----------|--------------|-------------------|---|
| AT1979 | Yes | No | 4 x 25 pcs |



AT1979

Adapter L, type Lexcom

- Adapter for attachment of a Lexcom RJ45 connector in the AK2-D cover.
- Version 'LL' has a label window for placement of the coding strip.


| Art. No. | Halogen free | With label window |  |
|----------|--------------|-------------------|---|
| AT1986 | Yes | No | 4 x 25 pcs |
| AT1987 | Yes | Yes | 4 x 25 pcs |



AT1986

Adapter P, type Panduit

- Adapter for attachment of a Panduit RJ45 connector in the AK2-D cover.
- Version 'L' has a label window for placement of the coding strip.


| Art. No. | Halogen free | With label window |  |
|----------|--------------|-------------------|---|
| AT1988 | Yes | No | 4 x 25 pcs |
| AT1989 | Yes | Yes | 4 x 25 pcs |



AT1988

Adapter RM, type Reichle & DeMassari

- Adapter for attachment of a Reichle & DeMassari RJ45 connector in the Universal Data Box, Patch Cabinet or the AK2-D cover.


| Art. No. | Halogen free | With label window |  |
|----------|--------------|-------------------|---|
| AT1980 | Yes | No | 4 x 25 pcs |



AT1980

Adapter W, type Wieland BST14

- Adapter for mounting of Wieland BST14 snap-in connector in the AK2-D cover.
- This connector can be used for control signals for light control systems and dimmable fixtures with a 0-10V control signal.

| Art. No. | Halogen free | With label window |  |
|----------|--------------|-------------------|---|
| AT1978 | Yes | No | 4 x 25 pcs |



AT1978


Universele ICT-oplossingen

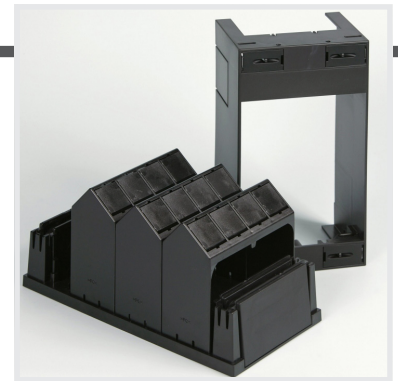


Patch cabinet, Data

Patch cabinet specs, black

- 3x removable modules for every 4 adapters
- 2x entry plate for 8 conduits ø 19 mm.
- 2x blind plate with break-outs for various size conduits
- Attachment points for hook-and-loop fasteners every 15 mm on the base plate
- Adapters of choice can be ordered separately
- Dimensions: 220 x 115 x 88/115 mm (wxhxd)
- Suitable for max. 12 connector outputs
- Suitable for data cabling Cat.5e, Cat.6, Cat.6A and Cat.7


| Art. No. | Width | Height | Depth | Halogen free |  |
|----------|--------|--------|-----------|--------------|---|
| AT1881 | 115 mm | 220 mm | 88/115 mm | Yes | 1 pc. |



AT1881

Patch cabinet specs, white

- 3x removable modules for every 4 adapters
- 2x entry plate for 8 conduits ø 19 mm.
- 2x blind plate with break-outs for various size conduits
- Attachment points for hook-and-loop fasteners every 15 mm on the base plate
- Adapters of choice can be ordered separately
- Dimensions: 220 x 115 x 88/115 mm (wxhxd)
- Suitable for max. 12 connector outputs
- Suitable for data cabling Cat.5e, Cat.6, Cat.6A and Cat.7

| Art. No. | Width | Height | Depth | Halogen free |  |
|----------|--------|--------|-----------|--------------|---|
| AT1882 | 115 mm | 220 mm | 88/115 mm | Yes | 1 pc. |




AT1882

Universal data box

Universal Data Box IC-2

- dimensions: 102x67x50 mm (lxwxh)
- Order preferred adapters separately, see selection list
- Break-out ports in the cover for various sizes of cable conduits

| Art. No. | Colour |  |
|----------|-------------|---|
| AT1861 | Cream-white | 20 pcs |




AT1861

Universal ICT-solutions

Universal Data Box IC-4

- dimensions: 124x124x50 mm (lxwxh)
- Order preferred adapters separately, see selection list
- Break-out ports in the cover for various sizes of cable conduits

| Art. No. | Colour |  |
|----------|-------------|---|
| AT1871 | Cream-white | 10 pcs |




AT1871

Adapters

Adapter A, type Avaya Systimax

- Adapter for attachment of an Avaya-Systimax RJ45 connector in the Universal Data Box, Patch Cabinet or the AK2-D cover.


| Art. No. | Halogen free | With label window |  |
|----------|--------------|-------------------|---|
| AT1972 | Yes | No | 4 x 25 pcs |

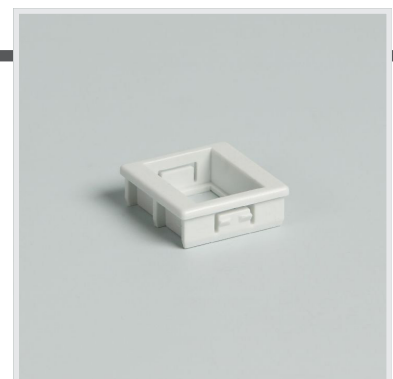


AT1972

Adapter B, type 20,4mm

- Adapter for attachment of an AMP-Tyco, Brandrex or Nexans RJ45 connector in the Universal Data Box, Patch Cabinet or the AK2-D cover.


| Art. No. | Halogen free | With label window |  |
|----------|--------------|-------------------|---|
| AT1974 | Yes | No | 4 x 25 pcs |



AT1974

Adapter C, type 19.4 mm

- Adapter for attachment of a 3M, Krone, Radiall or Siemon RJ45 connector in the Universal Data Box, Patch Cabinet or the AK2-D cover.


| Art. No. | Halogen free | With label window |  |
|----------|--------------|-------------------|---|
| AT1976 | Yes | No | 4 x 25 pcs |



AT1976

Adapter I+, type Infra Plus

- Adapter for attachment of an InfraPlus RJ45 connector in the Universal Data Box, Patch Cabinet or the AK2-D cover.


| Art. No. | Halogen free | With label window |  |
|----------|--------------|-------------------|---|
| AT1979 | Yes | No | 4 x 25 pcs |



AT1979

Adapter L, type Lexcom

- Adapter for attachment of a Lexcom RJ45 connector in the Universal Data Box, Patch Cabinet or the AK2-D cover.


| Art. No. | Halogen free | With label window |  |
|----------|--------------|-------------------|---|
| AT1986 | Yes | No | 4 x 25 pcs |



AT1986

Adapter P, type Panduit

- Adapter for attachment of a Panduit RJ45 connector in the Universal Data Box, Patch Cabinet or the AK2-D cover.


| Art. No. | Halogen free | With label window |  |
|----------|--------------|-------------------|---|
| AT1988 | Yes | No | 4 x 25 pcs |



AT1988

Adapter RM, type Reichle & DeMassari

- Adapter for attachment of a Reichle & DeMassari RJ45 connector in the Universal Data Box, Patch Cabinet or the AK2-D cover.

| Art. No. | Halogen free | With label window |  |
|----------|--------------|-------------------|---|
| AT1980 | Yes | No | 4 x 25 pcs |



AT1980

Universal ICT-solutions

Adapter Blind, type X

- Blind cover for sealing an open break-out port in the AK2-D cover after a change or a mistake.
- Blind cover for sealing an open break-out port in the Patch Cabinet after a change or a mistake.
- The blind cover is used to seal any opening behind the dust cap in the Universal Data Box.

| Art. No. | Halogen free |  |
|----------|--------------|---|
| AT1970 | Yes | 5 x 10 pcs |



AT1970

Article number index

| Art.no. | Description | Pag.no. | Art.no. | Description | Pag.no. |
|---------|--|---------|---------|-------------------------------------|---------|
| AT1861 | Universal Data Box IC-2 | 41 | AT29344 | Hybrid FiberManagement Plate (48v) | 7 |
| AT1871 | Universal Data Box IC-4 | 42 | AT29351 | Hybrid FiberManagement Plate (48v) | 7 |
| AT1881 | Patch cabinet specs, black | 41 | AT29352 | Hybride FiberManagement Plaat (48v) | 8 |
| AT1882 | Patch cabinet specs, white | 41 | AT29353 | Hybride FiberManagement Plaat (48v) | 8 |
| AT1958 | AK2-S Data/MK | 33 | AT29354 | Hybride FiberManagement Plaat (48v) | 8 |
| AT1960 | AK2-S Data/VK | 33 | AT29361 | Hybrid FiberManagement Box (48v) | 13 |
| AT1961 | AK2-S Data/GZ | 33 | AT29362 | Hybrid FiberManagement Box (48v) | 13 |
| AT1962 | AK2-S Data enclosure base | 33 | AT29363 | Hybrid FiberManagement Box (48v) | 14 |
| AT1963 | AK2-S L/D data enclosure base | 34 | AT29371 | Hybrid FiberManagement Box (48v) | 14 |
| AT1964 | AK2-D Data cover | 34 | AT29372 | Hybrid FiberManagement Box (48v) | 14 |
| AT1965 | AK2-D4 cat 6/7 Data cover | 34 | AT29373 | Hybrid FiberManagement Box (48v) | 15 |
| AT1966 | Slide-in data lead-in | 34 | AT29391 | Hybrid FiberManagement Box (24v) | 13 |
| AT1970 | Adapter Blind, type X | 35 | AT29397 | Cover plug | 9 |
| AT1970 | Adapter Blind, type X | 44 | AT29397 | Cover plug | 15 |
| AT1972 | Adapter A, type Avaya Systemax | 35 | | | |
| AT1972 | Adapter A, type Avaya Systemax | 42 | | | |
| AT1973 | Adapter AL, type Avaya-Systemax | 35 | | | |
| AT1974 | Adapter B, type 20,4mm | 35 | | | |
| AT1974 | Adapter B, type 20,4mm | 42 | | | |
| AT1975 | Adapter BL, type 20.4 mm | 35 | | | |
| AT1976 | Adapter C, type 19.4 mm | 35 | | | |
| AT1976 | Adapter C, type 19.4 mm | 42 | | | |
| AT1977 | Adapter CL, type 19.4 mm | 35 | | | |
| AT1978 | Adapter W, type Wieland BST14 | 37 | | | |
| AT1979 | Adapter I+, type Infra Plus | 36 | | | |
| AT1979 | Adapter I+, type Infra Plus | 43 | | | |
| AT1980 | Adapter RM, type Reichle & DeMassari | 36 | | | |
| AT1980 | Adapter RM, type Reichle & DeMassari | 43 | | | |
| AT1986 | Adapter L, type Lexcom | 36 | | | |
| AT1986 | Adapter L, type Lexcom | 43 | | | |
| AT1987 | Adapter LL, type Lexcom | 36 | | | |
| AT1988 | Adapter P, type Panduit | 36 | | | |
| AT1988 | Adapter P, type Panduit | 43 | | | |
| AT1989 | Adapter PL, type Panduit | 36 | | | |
| AT29002 | Universal splice trays 24HS / 4mm | 30 | | | |
| AT29003 | Cover for universal splice tray, including laser light warning | 30 | | | |
| AT29004 | Universal splice trays 48ANT / 4mm | 29 | | | |
| AT29005 | Final plugs (set of 2 pieces) | 30 | | | |
| AT29008 | Universal splice trays 24ANT / 8mm | 29 | | | |
| AT29009 | Universal Splitter Tray 8mm | 30 | | | |
| AT29012 | Universal splice trays 24HS / 8mm | 29 | | | |
| AT29016 | Repair Closure AK2-Fiber | 22 | | | |
| AT29017 | Compact Fiber Dome Cable 5 - 6,5 mm. | 21 | | | |
| AT29018 | Compact Fiber Dome Duct 7 - 8 mm. | 21 | | | |
| AT29020 | Compact Fiber Dome Aerial 3 - 6,5 mm. | 21 | | | |
| AT29027 | Mounting bracket CFD | 22 | | | |
| AT29030 | Housing FttX-distribution closure | 5 | | | |
| AT29100 | Attema Universal FTU | 25 | | | |
| AT29292 | Midi Fiber Dome (HS) | 9 | | | |
| AT29293 | Midi Fiber Dome (ANT) | 9 | | | |
| AT29311 | Street cabinet + hybrid FiberManagement Box (48v) | 16 | | | |
| AT29312 | Street cabinet + hybrid FiberManagement Box (48v) | 16 | | | |
| AT29313 | Street cabinet + hybrid FiberManagement Box (48v) | 17 | | | |
| AT29316 | Hybrid FiberManagement Box (24v) | 15 | | | |
| AT29321 | Street cabinet + hybrid FiberManagement Box (48v) + Window Cut | 17 | | | |
| AT29331 | Hybrid FiberManagement Plate (24v) | 5 | | | |
| AT29332 | Hybrid FiberManagement Plate (24v) | 5 | | | |
| AT29333 | Hybrid FiberManagement Plate (24v) | 6 | | | |
| AT29341 | Hybrid FiberManagement Plate (48v) | 6 | | | |
| AT29342 | Hybrid FiberManagement Plate (48v) | 6 | | | |
| AT29343 | Hybrid FiberManagement Plate (48v) | 7 | | | |

Article number index

Art.no. Description

Pag.no.

Art.no. Description

Pag.no.

Picture Index

AT29030 Pag. 5 AT29331 Pag. 5 AT29332 Pag. 5 AT29333 Pag. 6 AT29341 Pag. 6 AT29342 Pag. 6



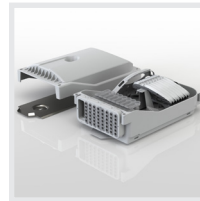
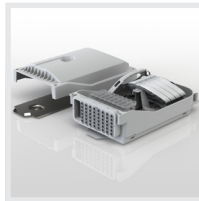
AT29343 Pag. 7 AT29344 Pag. 7 AT29351 Pag. 7 AT29352 Pag. 8 AT29353 Pag. 8 AT29354 Pag. 8



AT29397 Pag. 9 AT29292 Pag. 9 AT29293 Pag. 9 AT29391 Pag. 13 AT29361 Pag. 13 AT29362 Pag. 13



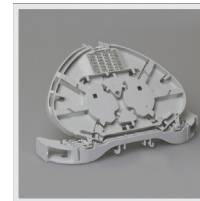
AT29363 Pag. 14 AT29371 Pag. 14 AT29372 Pag. 14 AT29373 Pag. 15 AT29397 Pag. 15 AT29316 Pag. 15



AT29311 Pag. 16 AT29312 Pag. 16 AT29313 Pag. 17 AT29321 Pag. 17 AT29017 Pag. 21 AT29018 Pag. 21



AT29020 Pag. 21 AT29027 Pag. 22 AT29016 Pag. 22 AT29100 Pag. 25 AT29012 Pag. 29 AT29008 Pag. 29



Picture Index

AT29004 Pag. 29 **AT29002** Pag. 30 **AT29009** Pag. 30 **AT29003** Pag. 30 **AT29005** Pag. 30 **AT1960** Pag. 33



AT1961 Pag. 33 **AT1958** Pag. 33 **AT1962** Pag. 33 **AT1963** Pag. 34 **AT1966** Pag. 34 **AT1964** Pag. 34



AT1965 Pag. 34 **AT1970** Pag. 35 **AT1972** Pag. 35 **AT1974** Pag. 35 **AT1976** Pag. 35 **AT1979** Pag. 36



AT1986 Pag. 36 **AT1988** Pag. 36 **AT1980** Pag. 36 **AT1978** Pag. 37 **AT1881** Pag. 41 **AT1882** Pag. 41



AT1861 Pag. 41 **AT1871** Pag. 42 **AT1972** Pag. 42 **AT1974** Pag. 42 **AT1976** Pag. 42 **AT1979** Pag. 43



AT1986 Pag. 43 **AT1988** Pag. 43 **AT1980** Pag. 43 **AT1970** Pag. 44





Schelluinsestraat 1
4203 NJ Gorinchem

Phone: +31(0)183 650 650
infra@attema.com
www.attema.com